

# N·GAGE

MASSIVELY MULTIPLAYER

ONLY ON  
N·GAGE

## Pocket Kingdom™

OWN THE WORLD

SEGA®

N·GAGE  
ARENA

ONLINE FEATURES AVAILABLE

Part No. 9232383, Issue No. 01  
R/XXXXX/YY

Copyright © 2004 Nokia. All rights reserved.

Nokia, N-Gage and N-Gage QD are trademarks or registered trademarks of Nokia Corporation. Other company and product names mentioned herein may be trademarks or trade names of their respective owners.  
Printed in China.

Package contains one game on one game card. Made in Taiwan.  
The information contained in this user guide was written for Pocket Kingdom™. The publishers operate a policy of ongoing development and reserve the right to make changes to any of the products described in this document without prior notice.

UNDER NO CIRCUMSTANCES SHALL NOKIA BE RESPONSIBLE FOR ANY LOSS OF DATA OR INCOME OR ANY SPECIAL, INCIDENTAL, AND CONSEQUENTIAL OR INDIRECT DAMAGES HOWSOEVER CAUSED. THE CONTENTS OF THIS DOCUMENT ARE PROVIDED "AS IS," EXCEPT AS REQUIRED BY APPLICABLE LAW, NO WARRANTIES OF ANY KIND, EITHER EXPRESS OR IMPLIED, INCLUDING, BUT NOT LIMITED TO, THE IMPLIED WARRANTIES OF MERCHANTABILITY AND FITNESS FOR A PARTICULAR PURPOSE, ARE MADE IN RELATION TO THE ACCURACY AND RELIABILITY OR CONTENTS OF THIS DOCUMENT. NOKIA RESERVES THE RIGHT TO REVISE THIS DOCUMENT OR WITHDRAW IT AT ANY TIME WITHOUT PRIOR NOTICE.

#### EXPORT CONTROLS

This product contains commodities, technology, or software exported from the United States in accordance with the Export Administration regulations. Diversion contrary to U.S. law is prohibited.

Further detailed information is given in the separate user guide. Do not use this guide in place of the complete user guide, which provides important safety and maintenance information.

## FOR YOUR SAFETY

Read these simple guidelines. Breaking the rules may be dangerous or illegal. Read the user guide for your gaming device for further information.



#### PLAY SAFELY

Do not use this product when wireless phone use is prohibited or when it may cause interference or danger.  
Follow any restrictions or rules in the device's user guide.



#### ROAD SAFETY COMES FIRST

Obey all local laws. Always keep your hands free to operate the vehicle while driving. Your first consideration while driving should be road safety.



#### INTERFERENCE

All wireless devices may be susceptible to interference, which could affect performance.



#### USE SENSIBLY

Use the game deck only in the normal position as shown in the user guide.



#### ENHANCEMENTS AND BATTERIES

Use only approved enhancements and batteries. Do not connect incompatible products.

## Important: Safety information about video games

### About photosensitive seizures

A very small percentage of people may experience a seizure when exposed to certain visual images, including flashing lights or patterns that may appear in video games. Even people who have no history of seizures or epilepsy may have an undiagnosed condition that can cause photosensitive epileptic seizures while watching video games. These seizures may have a variety of symptoms, including lightheadedness, altered vision, eye or face twitching, jerking or shaking of arms or legs, disorientation, confusion, or momentary loss of awareness. Seizures may also cause loss of consciousness or convulsions that can lead to injury from falling down or striking nearby objects.

**Immediately stop playing and consult a doctor** if you experience any of these symptoms. Adults who allow teenagers (or children) to play the games should watch for or ask their children about these symptoms as they are more likely than adults to experience these seizures. The risk of photosensitive epileptic seizures may be reduced by playing in a well-lit room and by not playing when you are drowsy or fatigued. If you or any of your relatives have a history of seizures or epilepsy, consult a doctor before playing.

### Play safely

Take a break from playing games at least every half hour. Stop playing immediately if you begin to feel tired or if you experience an unpleasant sensation or pain in your hands and/or arms. If the condition persists, consult a doctor. Use of vibration can aggravate injuries. Do not turn vibration on if you have any ailment in the bones or joints of your fingers, hands, wrists, or arms.

## CARE AND MAINTENANCE


Your game card and game deck are products of superior design and craftsmanship and should be treated with care. The suggestions below will help you protect your warranty coverage and enjoy your game for many years.

- Keep the game card and game deck dry. Precipitation, humidity and all types of liquids or moisture can contain minerals that will corrode electronic circuits.
- Do not use or store the game card and game deck in dusty, dirty areas.
- Do not store the game card and game deck in hot areas.
- Do not store the game card and game deck in cold areas. When the game deck returns to its normal temperature, moisture can form inside the game deck and damage electronic circuit boards.
- Do not attempt to open the game card or game deck other than as instructed in the user guide.
- Do not drop, knock, or shake the game card and game deck.
- Do not use harsh chemicals, cleaning solvents, or strong detergents to clean the game card or game deck.
- Keep the game card out of the reach of small children.

All of the above suggestions apply equally to your game card, game deck, and any enhancement.

## Inserting the N-Gage™ Game Card

### Nokia N-Gage™

1. Make sure the N-Gage game deck is switched off. If it's on, press and hold  to switch off the device.
2. With the back of the N-Gage game deck facing you, slide open the cover (Fig. 1).
3. Slide finger into the finger slot, then lift and remove the battery (Fig. 2).
4. Remove the existing game card or memory card (if you have one fitted).
5. Position the N-Gage game card in its slot. Make sure that the gold contacts of the card are facing down and lined up with the gold contacts on the device (Fig. 3).
6. When you have secured the card in place, replace the battery, then replace the cover by sliding it back into place (Fig. 4).



### Nokia N-Gage™ QD

1. You do not have to switch off the N-Gage QD game deck to change N-Gage game cards.
2. Before inserting or removing a game card, ensure you save all unsaved data as inserting a new game card will close all open applications.
3. Open the card slot (Fig. 1) and insert your game card (Fig. 2).
4. Once a game card is inserted, the game will start automatically.

(Please ensure the auto-start feature is enabled on your game deck)





## Starting a Game


### Nokia N-Gage™


Turn the power switch on.

The game icon will automatically appear on the Menu screen once the game card is successfully installed.

Press , scroll to the game icon and press . Now you're ready to start the game.

### Nokia N-Gage™ QD

Press and hold the power key  to turn the game deck on.

To start a game when a game card is inserted, press  in standby mode. You can also start games by selecting Games in the menu.

## Table of Contents

Inserting the N-Gage™ Game Card .....	3
Starting a Game .....	3
The Pocket Kingdom™ Story .....	4
Aim of the Game .....	5
Game Flow .....	5
Key Controls .....	6
Title Screen .....	6
The Shop Command .....	8
The Party Command .....	9
The Map Command .....	11
About Battles .....	13
The Lab Command .....	14
Nokia Limited Warranty .....	16
Limitations on Warranty .....	16
Obtaining Warranty and Technical Support ...	16
N-Gage™ Arena Instructions .....	16
Register Your Game Online .....	16

*Note: A SIM card must be inserted in the N-Gage game deck before a game can be played. Insert a SIM card as described in the N-Gage game deck instruction manual.*

*Note: Do not use the USB port during gameplay.*

## ☪ The Pocket Kingdom™ Story ☪

*The Map of Ulgress is absolute craziness right now!*

*Griefer Ulgress, for whom the Map was named, has had his online account banned. Now, every 'Pocket Kingdom' from Australia to Finland is vying for 'Ulgress' spot on the All-Time Owner Board!*

*The battles have spread to the northeast of the Map, and the 'Pocket Kingdom' that once Owned the hick town of Elynotis has suffered such an embarrassing defeat that its master has vowed to never again return.*

*You have inherited this 'Pocket Kingdom' and a handful of "loot," the currency of the Map of Ulgress.*

*Now set forth from Elynotis with war in your thoughts.*

*Make sharp your skillz.*

*Make sweet your army.*

*Own the World!*



## ☪ Aim of the Game ☪

The aim in Pocket Kingdom™ is to defeat all other Pocket Kingdoms (software opponents and other players from all over the world), and become the number-one ranked Pocket Kingdom on the All-Time Owner Board. Helpful characters called Fabbis\* will pop up in various places along the way to give you hints, so follow their advice as you carry out your quest.

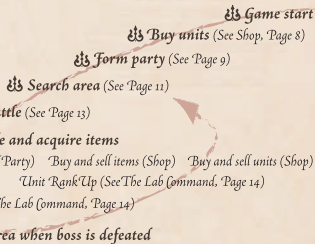
You'll make your way through the game by collecting units and getting hold of loot (the currency of the Map of Ulgress) and items after winning battles with enemy Pocket Kingdoms. You can use RankUps to improve the rank of your units, making your units stronger, and sometimes transforming them into completely different units. In the Pocket Kingdom world, you need loot to do just about everything. So if you run out, it's game over.

\* Fabbis: These helpful characters will guide you through the game. There are lots of different Fabbis in the Pocket Kingdom world. Pocket Kingdoms don't choose Fabbis: Fabbis choose Pocket Kingdoms.



## ☪ Game Flow ☪

The different stages of Pocket Kingdom™ are "Shop", "Form Party", "Area Search", "Attack" and "Move". First you must "Shop" for units in your Pocket Kingdom. Then "Form" a party of selected units, and send that party out to perform an "Area Search". If you find an enemy Pocket Kingdom in the area, you can send a party to "Scout" or "Attack". Once you defeat the area boss, the path to the next area will open up.



## Key Controls

### Controller Key

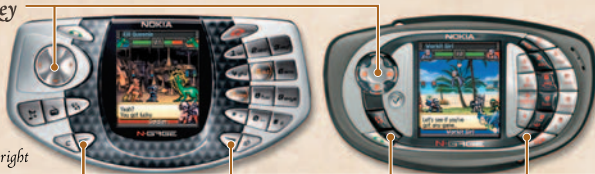
Cursor movement

Menu selection

Text scrolling

Battle screen



Pan camera left/right



Key 5  
Confirm

Key 7  
Cancel

Left and Right  
Selection Keys  
Display  
Menu screen

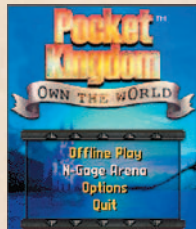
You can save your progress at any time during a game by pressing **Left Selection Key**  or **Right Selection Key** . Please note that this game has an autosave function, so even if you finish a game without saving, your progress will be saved automatically and you can start the game later from the same point.

## Title Screen

The Title screen is displayed when the game starts. Here's an explanation of the commands that appear on the Title screen. If none of these commands is selected, the opening movie will begin.

### Offline Play

Single player mode. Travel all over the world, battling software opponents and strengthening your own Pocket Kingdom. To start from the beginning, select "New Game", or to keep playing from where you left off select "Continue". (The "Continue" option will not be displayed if there is no saved data.)




✚ Title screen

## N-Gage™ Arena

Once you find the “Online Crest” in “Offline Play”, the “N-Gage™ Arena” will become available. In this mode you can use the network to challenge other players to battles and carry out auctions. For more detailed information about N-Gage™ Arena, look at the in-box insert “N-Gage™ Arena Quick Start Guide for Pocket Kingdom”.

## Options

Here you can change the music volume or the language of in-game text.

**Volume** Choose your preferred volume from 5 different settings. Use **Controller Key Left**  or **Controller Key Right**  to adjust the volume.



**Credits** Display staff credits.

**Language** Change language.

## Quit

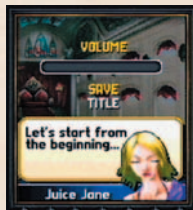
Exit Pocket Kingdom and return to the Menu screen.

## How to Save

Press **Left Selection Key**  or **Right Selection Key**  during a game to bring up the Save screen. You can access the screen any time this way. If you select “Title” when this screen is displayed, it will take you back to the Title screen without saving. You can also adjust the volume from this screen.



† N-Gage™ Arena



† Save



## The Shop Command

"Shop" is the command you use when you want to buy or sell items and units. This is where you'll buy your units when you play the game for the first time. You can sell items you've got hold of in battle and it's a good idea to save your loot too.

### Buy

Buy items or units.

- Item** Displays the different types of items. Select a category to display each individual item within that category.
- Unit** Units available for purchase will be displayed. In the first area, you'll only have access to Soldier and Noble units.

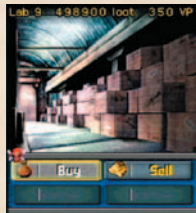
### Sell

Sell items or units.

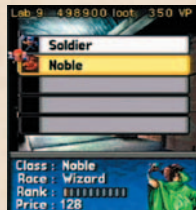
- Item** First choose the category of item you want to sell. The items you can sell within that category will be displayed.
- Unit** Displays your units. Select the one you want to sell.



loot



† The Shop Command



† Buy/Sell

## ☪ The Party Command ☪

Using the “Party” command, you can “Form” your units into parties, equip them with items and offer your units “Medical” attention. Each unit has different characteristics that affect their scouting and combat abilities. There are over 100 types of units, so try to choose the best ones for your purposes. You can also use the “List” to check which items and units you have in your collection. When you select “Party”, the following commands will become available:

### Form ☪

Form your party. First, select the party you want to form and then decide which units you want to include in it. Each unit has a slot value, and each party can include a total of 6 slots. You can also set orders for party actions during battle, etc.



☪ The Party Command

### Screen explanation ☪

Individual tactics

Equipped items

Break up party

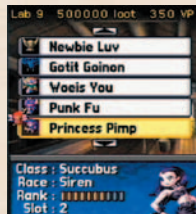
Unit name



Rank

Party strategy

Confirm changes



☪ Form

## Medical

Restoring the health of your units costs loot.  
You can restore the health of your units in 3 ways:

- All** Restore the health of all units.
- Party** Restore the health of the selected party.
- Unit** Restore the health of the selected unit.

## List

Check which items and units you have in your collection.

- Item** The different item types will be displayed first. Choose the type of item that you want to check, and the items you have belonging to that group will be displayed. Select an item to learn more about it.
- Unit** Displays all the units you have in your collection. Select a unit to learn more about it.



*Harpy*



† Medical

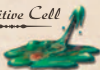


† List



*Swordman*

*Primitive Cell*



*Mage Silion*



## ☞ The Map Command ☞

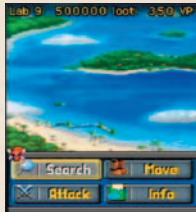
"Map" is the command you use to "Search" areas, "Attack" enemy Pocket Kingdoms, and move your own Pocket Kingdom. Use "Map" after you've made your preparations in "Party", "Shop", "Lab" and other stages of the game. Remember that you may find traps on your searches. You could also get yourself involved in a quest....

### Search ☞

Dispatch your party to search the area. If they're successful, they'll find the enemy Pocket Kingdoms but sometimes they'll fail to find anything.

**Area Search** Send your party out to see if there's anything in the area. A short time after the party has set off, you'll get a message with the search results.

**Scout** Investigate the defenses of the enemy Pocket Kingdom you've found. A short time after the party has left, you'll get a message with the search results. Finding out about the enemy's defenses will help you put together a more effective party and increase your chances of victory in battle. You may also be given quests while on your search.



☞ The Map Command



## Move

"Move" your Pocket Kingdom to a different area. You can only do this if you've fulfilled the special requirements of the area in which you presently reside. You won't be able to move if you have a party in action.

## Attack

When you've found the enemy's Pocket Kingdom, you can attack. Choose the party to carry out the attack then send them into battle. A set time after they've left, the Battle screen will be displayed.

## Info

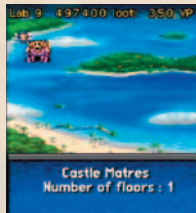
Fabbis will appear to give you some hints.



*Pocket Kingdom*



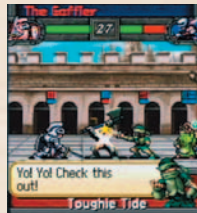
‡ Move



‡ Attack

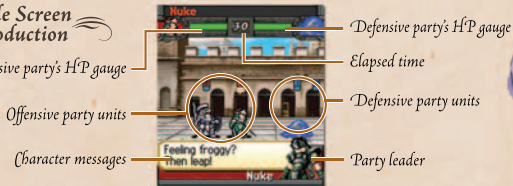
## About Battles

Battles are carried out automatically using the decisions made when a party was formed, so the player never controls fighting units directly. The battles take place in real time and finish when one side is wiped out or unable to fight, or after the battle timer has expired. If you destroy an enemy unit, you get to keep their items and loot. But if one of your units sustains a lot of damage, it will be Out or Owned. "Out" means that not only will the unit lose its equipped items, but also its HP (Health Points) will fall to zero and it will be excluded from the party. You can restore its HP in Medical to enable it to fight again. But "Owned" means certain death for the unit, which will disappear along with all of its equipped items. It's possible to set battlefield conditions when using defense parties. Selecting conditions that correspond to your party's abilities should give you a greater chance of victory in battle.



† Battle

### Battle Screen Introduction



Imp

## The Lab Command

“Lab” allows you to combine items, RankUp units and customize your Pocket Kingdom, but this command won’t appear as soon as a game starts. You can only select it when you’ve succeeded in clearing the first area on the Map of Ulgress.

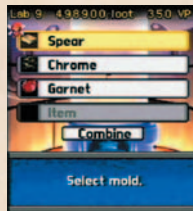
### Combine

You can “Combine” Molds and Ore to make completely new items. To make a combination you must have 1 item each from these 2 categories. When you “Combine”, you can also add items from Jewels and Others. You can use a maximum of 2 items from these categories.

Choose the items you want to use and select “Combine” to display the resulting item. If you like it, select “Combine” again to accept the combination. If it goes well, you’ve got yourself a new item. But combinations don’t always work. It’s a good idea to check the success rating (displayed on screen) first.



† The Lab Command



† Combine



## RankUp

You can RankUp fighting units by applying special items called Emblems. With RankUp, you can increase attack or defense power and give your units special skills. Use the "Combine" command to build the Emblem you need but remember that different Emblems affect different units. Unlike "Combine", there is no chance of failure when performing a RankUp.



† RankUp

## Vault

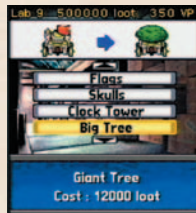
This is where successes in the game (e.g. N-Gage™ Arena unlocked) are recorded.

## Upgrade

Use this command to customize your Pocket Kingdom. You can change 4 different aspects of its appearance. Customizing will make your Pocket Kingdom look different from those of other players when you're in N-Gage™ Arena mode.

Here are the 4 aspects you can customize:

- Castle** Change the size of your Pocket Kingdom.
- Transporter** Change the engine on your Pocket Kingdom (attached underneath).
- Mark** Change your Pocket Kingdom's trademark (affixed to the top).
- Color** You can change the color of your Pocket Kingdom, too!



† Upgrade



## Nokia Limited Warranty

Nokia warrants to the original consumer purchaser that the Nokia N-Gage game card shall be free from defects in material and workmanship for a period of 90 days from the date of purchase. If the Nokia N-Gage game card is found to be defective in material and workmanship within that 90 day warranty period, the Nokia N-Gage game card will be replaced free of charge. This limited warranty does not apply if the defect shall have been caused by negligence, abuse, damage, modification, tampering or any other causes not related to defective materials or workmanship. Please retain the original or a photocopy of your sales receipt to establish the date of purchase for warranty replacement. For replacement, return the Nokia N-Gage game card, with its original packaging and receipt, to the retailer from which the game card was originally purchased. In the event that you cannot obtain a replacement from the retailer, please contact Nokia. If Nokia no longer produces the game card, Nokia, at its sole option, may substitute a game card of another game title or refund the customer's purchase price.

## Limitations on Warranty

THE BENEFITS CONFERRED BY THIS LIMITED WARRANTY ARE IN ADDITION TO ANY OTHER RIGHTS AND REMEDIES UNDER ANY APPLICABLE LEGISLATION THAT CANNOT BE EXCLUDED. OTHERWISE, TO THE EXTENT PERMITTED BY LAW THE NOKIA N-GAGE GAME CARD AND ALL SOFTWARE CONTAINED ON IT ARE PROVIDED TO YOU "AS IS," WITHOUT WARRANTY OF ANY KIND, EXCEPT AS EXPRESSLY PROVIDED IN THIS NOKIA LIMITED WARRANTY. EXCEPT AS EXPRESSLY SET FORTH ABOVE, NOKIA EXPRESSLY DISCLAIMS ALL WARRANTIES, WHETHER ORAL OR WRITTEN, EXPRESSED OR IMPLIED, INCLUDING WARRANTIES OF MERCHANTABILITY AND FITNESS FOR A PARTICULAR PURPOSE. IN NO EVENT SHALL NOKIA BE LIABLE FOR ANY SPECIAL, CONSEQUENTIAL OR INCIDENTAL DAMAGES RESULTING FROM POSSESSION, USE OR MALFUNCTION OF THE NOKIA N-GAGE GAME CARD OR THE SOFTWARE CONTAINED ON IT, INCLUDING DAMAGES TO PROPERTY AND TO THE EXTENT PERMITTED BY APPLICABLE LAW, DAMAGES FOR PERSONAL INJURY, EVEN IF NOKIA HAS BEEN ADVISED OF THE POSSIBILITY OF THOSE DAMAGES. SOME COUNTRIES AND/OR AREAS DO NOT ALLOW LIMITATIONS ON HOW LONG AN IMPLIED WARRANTY LASTS, OR PERMIT THE EXCLUSION OF CONSEQUENTIAL OR INCIDENTAL DAMAGES, SO THE ABOVE LIMITATION OR EXCLUSION MAY NOT APPLY TO YOU. THIS WARRANTY PROVIDES YOU WITH SPECIFIC LEGAL RIGHTS. YOU MAY HAVE OTHER RIGHTS WHICH VARY FROM TERRITORY TO TERRITORY.

## Obtaining Warranty and Technical Support

To receive warranty and additional support, including troubleshooting assistance, please contact Nokia at: [www.n-gage.com](http://www.n-gage.com)

## N-Gage™ Arena Instructions

Your N-Gage game deck must be switched on and be online to use this feature.

N-Gage Arena is an online service that allows you to upload and download game content enhancements over the air to extend game play.

N-Gage Arena is network dependent and requires network support. To use the N-Gage Arena features you need to ensure that your service provider supports data traffic delivery (GPRS) and you have subscribed to a GPRS service. Some networks have limitations that affect your ability to play online. Please see your mobile provider about GPRS support and availability.

Once you have GPRS activated on your N-Gage game deck, select N-Gage Arena from the main menu screen or the in-game icons. More information and instructions are available at [arena.n-gage.com](http://arena.n-gage.com).

You may also need to register and subscribe for some online gaming services. You'll be prompted for this information when using N-Gage Arena. See [arena.n-gage.com](http://arena.n-gage.com) for more details.

N-Gage™ Arena support provided by Nokia.

Please refer to [arena.n-gage.com](http://arena.n-gage.com) for game play instructions.

## Register Your Game Online

To register, go online at: [www.n-gage.com](http://www.n-gage.com)

*Copyright © 2004 Nokia. All rights reserved. Nokia, N-Gage and N-Gage QD are trademarks or registered trademarks of Nokia Corporation. Other company and product names mentioned herein may be trademarks or trade names of their respective owners.*

**N-GAGE**  
NOKIA

[www.n-gage.com](http://www.n-gage.com)

**SEGA**®

Original Game © SEGA CORPORATION, 2004

Single Player

Multiplayer

Online Option\*

\* Online game play requires network support.

For use only with the N-Gage™ mobile game deck. Copyright © 2004 Nokia. All rights reserved. Nokia, N-Gage and N-Gage QD are trademarks or registered trademarks of Nokia Corporation. Other product and company names mentioned herein may be trademarks or trade names of their respective owners. Printed in China.

**Pocket  
Kingdom™**

OWN THE WORLD

SEGA is registered in the U.S. Patent and Trademark Office. Sega and Pocket Kingdom are registered trademarks or trademarks of Sega Corporation or its affiliates. Pocket Kingdom Game © 2004, Sega Corporation. All rights reserved.